

F SERIES

i.F2W G6473i



R.R.P.

One of the widest running surface in a minimum space. This treadmill combines a compact design with one of the widest running surface on the market which ensures a safe and comfortable training.

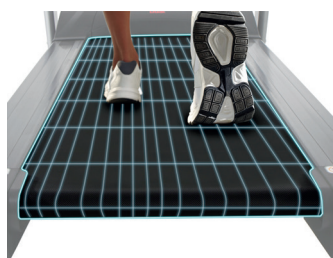


Monitor

Measurements:

Distance, Time, Speed, Calories, Pulse, Inclination

- Max. user weight: 115Kg
- Weight: 86Kg
- Dimensions: 174cm x 78cm x 174cm
- Power: 2,75CV/1,5CV
- Speed: 1-18Km/h
- Running surface: 135x51cm



WIDE RUNNING SURFACE

The extra wide running surface (135x51cm) in a compact chassis provides the highest comfort in the minimum space.



ECO-MODE

Enables a change in the software of the treadmill to drop the power consumption of the machine down an average of 25%.



DUAL

i.concept technology with Bluetooth 4.0. Get the most out of your fitness apps.



FOLDING

Fold and store your machine easily.



Specs	i.F2W G6473i
Use frequency	Regular
Maximum user weight	115Kg
Power (peak/continue)	2,75CV/1,5CV
Speed	1-18Km/h
Max. electrical elevation	0-12
ECO mode	Yes
Speed instant keys	Yes
Elevation instant keys	Yes
Running area (L x W)	135x51cm
Damping system	6 elastomers + K-Dumper
Contact heart rate measuring	Yes
Fan	Yes
Soft Drop System (SDS)	Yes
Transport wheels	Yes
Length	174cm
Width	78cm
Height	140cm
Weight	86Kg
Foldable	Yes
Programs	
Preset programs (Prg)	12
Random program (RP)	No
Customizable profiles (uprg)	No
Fitness test (FT)	No
Heart rate control program (HRC)	Yes
Recovery Program (RT)	No
Body Fat test (BF)	Yes
Monitor	
Screen	Blue backlit LCD
Telemetric heartrate	Yes, optional chest belt
Bluetooth heartrate	Yes, optional chest belt
iConcept	Yes

 Notes